

Spokane Transit Authority launches its long-awaited, bus rapid transit system this summer. The City Line, starting July 15, will begin the first leg of its round-trip bus route in Browne's Addition neighborhood just west of downtown, the route will then move into and through the downtown and the University District, through the Logan and Chief Garry neighborhoods, and complete its route at the Spokane Community College campus.

City Line shuttles will depart every 15 minutes, utilize electric battery-charged buses, and be accessed via vibrantly designed elevated platforms with real-time signage. Thirty-two elevated platforms celebrate Spokane's diversity of place and neighborhoods by highlighting the work of nine local artists.

Having served as lead designer for the integration of art into the City Line station designs, I am particularly excited to see this modern streetcar begin operations. Spokane Arts in partnership with STA began discussions in 2017 around how local artists could be incorporated into station design and how the art could then celebrate local place.

The economic benefits of placemaking are recognized nationally and include everything from bolstering regional tourism to attracting increased private investments. Placemaking creates spaces that people want to spend time in, builds pride of place, attracts talented workers, and supports the local economy.

It was a pleasure and honor to work with each of the nine artists below as they responded to community-informed parameters, worked in meeting STA branding requirements, and infused their designs with regional spirit, joy, and energy.

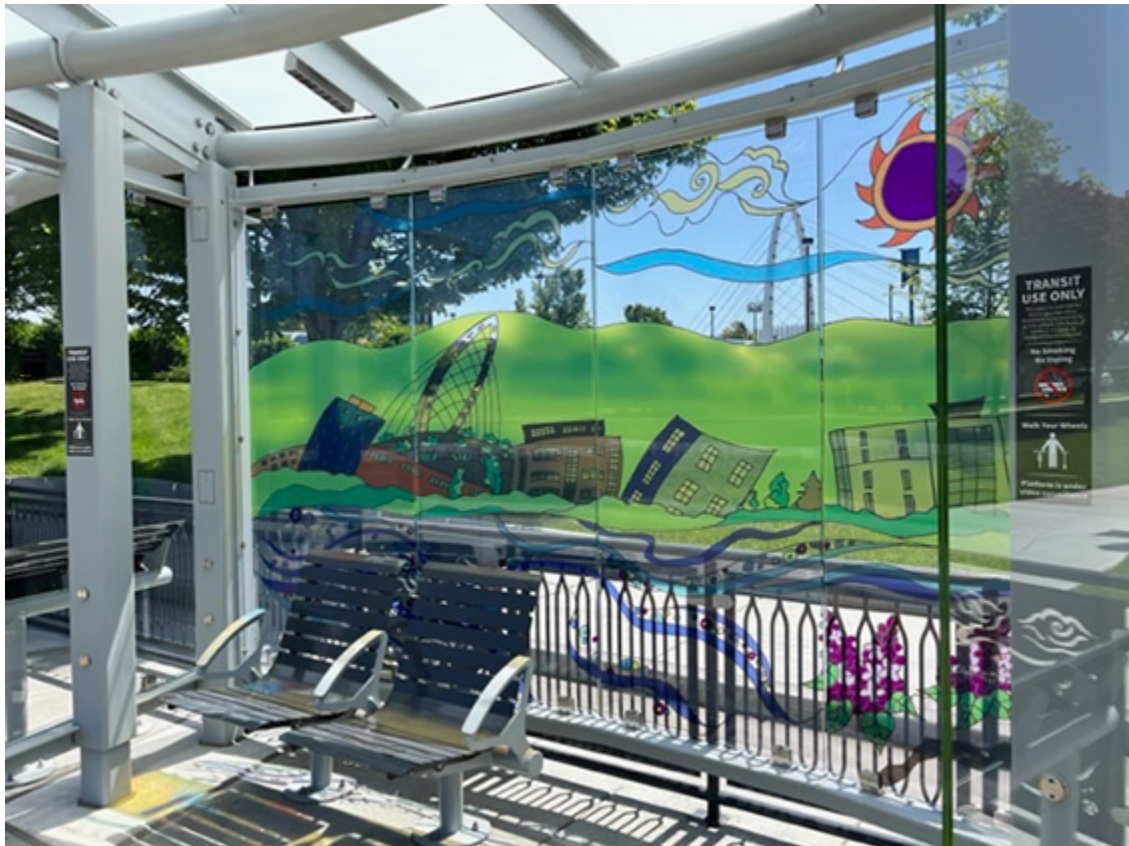
Here's to happy travels!

Kate J. Reed: Browne's Addition
Mariah Boyle: West End Downtown
Joshua Thomas: Spokane Symphony Stations
Ellen Picken: Central Downtown



Jiemei Lin: East End/West Main
Melissa Cole: University District
Keely Honeywell: Logan
Danielle Davis: Chief Garry
Jason Corcoran: Spokane Community College

Juliet Sinisterra, CEO



Spokane Falls Blvd City Line Station at the WSU Spokane campus. City Line Artist: Melissa Cole. Cole designed six stations along the City Line route all celebrating the "buzz of ideas, knowledge, and excitement" of the University District.

Board Member Focus

This year, Chuck Murphy, Gonzaga University proxy 2020-2022, stepped into an at-large UDDA board position and Executive Committee role. Chuck also continues to provide leadership as the UD



Development Committee Chair.

Chuck is a Spokane native and alum of Gonzaga University. After four years in public accounting, he began his career at Gonzaga University in 1978 as Controller. He became Vice President for Finance in 1985 and served in that capacity until 2018 when he became the University's Chief Strategy Officer.

During his time at Gonzaga, he has had responsibility for all the financial affairs of the University, various operating areas of the University, as well as campus planning and construction. He currently serves on the boards of Catholic Charities and Catholic Housing Ventures. He has also had a long history of Board and committee service at Gonzaga Prep.

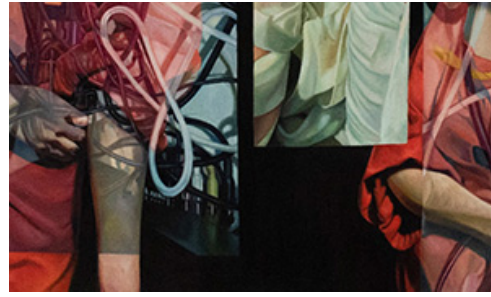
Noteworthy Community Events



Spokane Art School Artist Studio Applications

June Open Call

Applications are currently being accepted for two studio spaces at the Spokane Art School. All active artists over the age of 25 are invited to apply.



Saranac Arts Projects presents Mariah Boyle; Harry Mestyaneck, and Sarah Barnett: Transmute

June 7 Reception

Boyle is exhibiting new black and white drawings and prints along the theme that human nature is transforming alongside technological and scientific progression.



Spokane Unite – Collaborating for our Community

June 28

Spokane regional elected leadership announces a 90-day due diligence period to evaluate options for a regional model to improve our collective efforts around addressing homelessness.

Health Sciences & Services Authority of Spokane County
FUNDING HEALTH & LIFE SCIENCES.
PROMOTING PUBLIC HEALTH.

Applicant Information: HSSA Life Sciences Grant Opportunities

June 29

Health Sciences Service Authority (HSSA) of Spokane County promotes bioscience based economic development and advances new therapies and procedures to prevent disease and promote public health.



STA City Line Block Party

July 15



Celebrate the launch of the City Line at the Spokane Falls Blvd City Line Station adjacent to the WSU Spokane Campus.



WSU Phase One: Medical Building Ribbon Cutting

August 10

The transformed building will be a central hub for the Elson S. Floyd College of Medicine and will expand the educational capacity of WSU's College of Nursing and College of Pharmacy and Pharmaceutical Sciences, also housed on the Spokane campus.

Welcome to the University District's e-newsletter. You are on our email list as a University District partner, collaborator, community member, or interested party. If you would like to opt-out of future mailings, please use the Unsubscribe link.

© 2023 University District
120 N Pine St, Ste 252
Spokane, WA 99202
info@spokaneudistrict.org
www.spokaneudistrict.org

[View web version](#) | [Unsubscribe](#)