



# East Sprague Phase 2: Setting the stage for opportunities



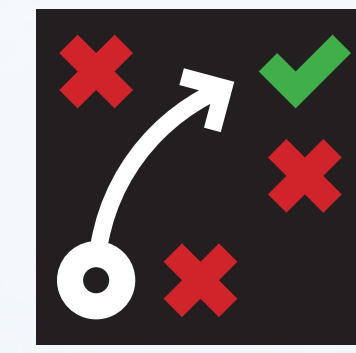
## Safety

Current corridor design lacks basic safety features leading to a variety of conflicts for transportation, business vitality, and neighborhood health.



## Transportation

Narrow lanes result in conflicts for vehicles and buses such as weaving, longer crossing lengths, and blind spots. Also, lack of lighting and safe pedestrian crossings increase risk of vehicle-pedestrian collisions.



## Emerging Opportunities

Sprague Avenue Phase II Project is an element of the City's Target Investment Area focus. The Goal? To positively impact economic conditions. The project segment is a major linkage between Downtown and East Spokane. Providing a safer, calmer and more parkable Sprague Avenue provides the foundation for continued physical and economic development and opportunities for exciting new enterprises and technological advancements.



Left turns from side streets cross two lanes of traffic

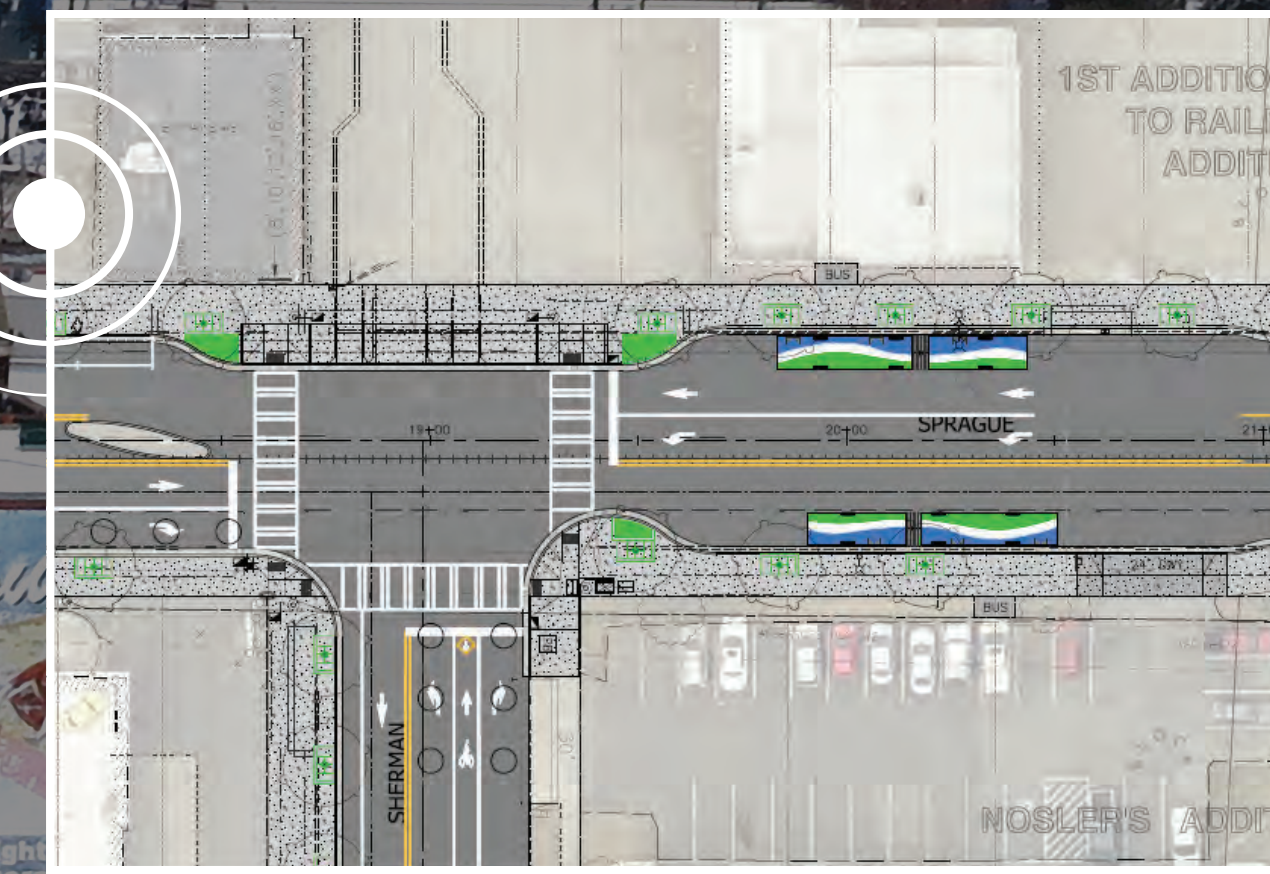
Issues created by left turns



Lack of pedestrian lighting throughout corridor



Narrow parking lanes



Street accommodates traffic and transit



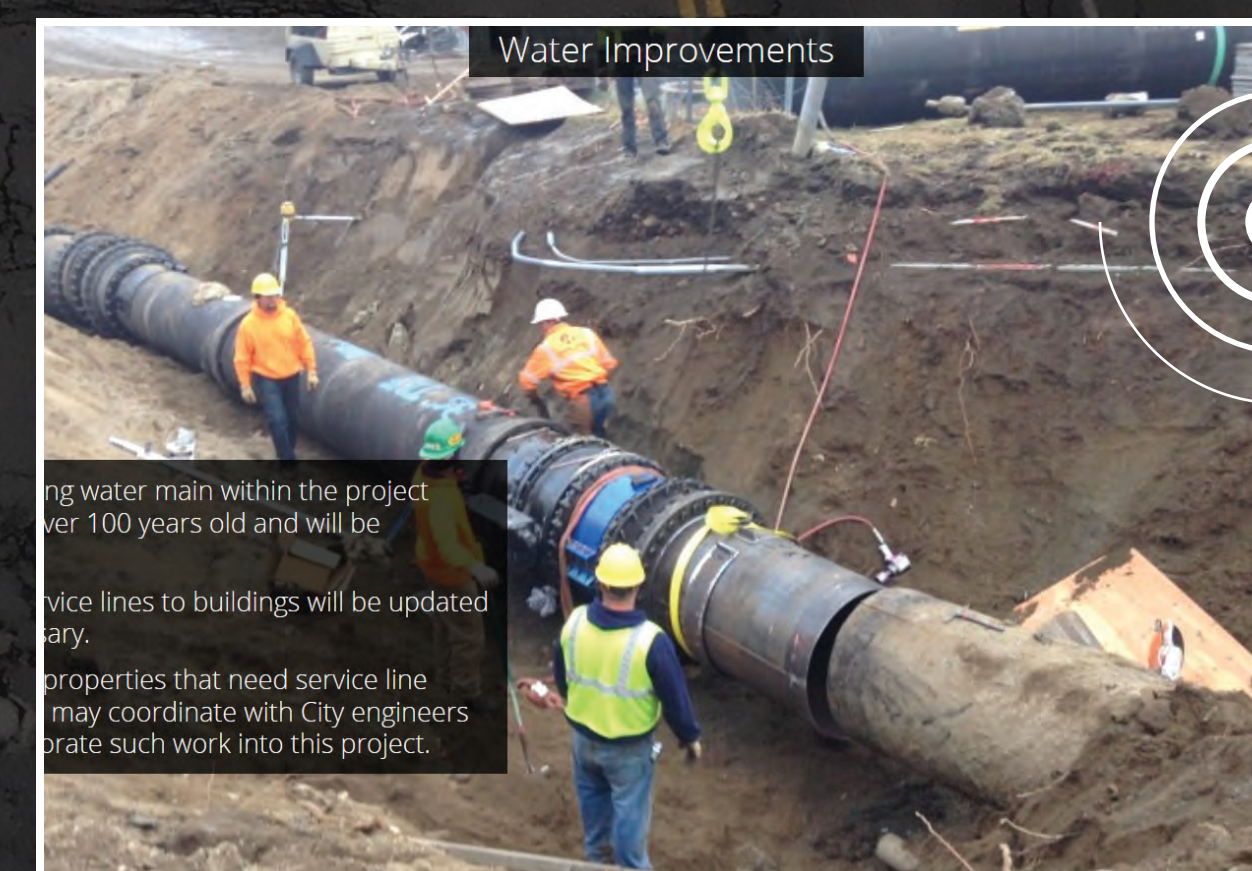
Invigorate U-District activities on the corridor and provide a more connected relationship between the U-District and Spokane's hands-on medical education facilities



Lack of safe pedestrian crossings



No trees or landscaping throughout corridor



The existing water main is over 100 years old and will be replaced



Substandard Sidewalks and ADA Updates