



The University District Community Visioning Open House (September
2016)

START

Welcome to The University District's online Community Visioning Open House. This interactive tool is intended to supplement the in-person Open House taking place on Tuesday, September 6 from 4:00pm-6:00pm at the office of Stay Alfred (123 East Sprague, Spokane, WA 99202).

Whether you attend/attended that session or not, we welcome your feedback on the design boards on the following pages.

By way of background, and since the completion of the original University District master plan in 2004, many significant new developments have taken place within The University District. The University District Development Association (UDDA) has served to bring a collective voice to the development of these advancements throughout the years.

From that time until now, over \$740M in public, private and institutional investments have been made within The University District boundaries. Today, the ongoing expansion of medical school programs and the full funding of The University District Gateway Bridge—as well as the City's investment in Martin Luther King Way and East Sprague upgrades—amplify the opportunities for continued community planning and collaboration.

We invite you to provide feedback on the following high-level design elements and to participate in expanded community visioning of The University District going forward.

Please click through the next screens to see a series of visioning images. Take notes regarding your likes, dislikes, other ideas, questions, recommendations, etc. You will be able to rate some images and record comments on subsequent screens.

Your ideas and input will be synthesized into a collective vision of what is possible and revealed at the *2016 University District Magazine* release party in October.

The first set of images provide examples of **City Life**. Elements such as architectural character, activities and culture are depicted. Use the next screen to tell us what you think of these images.

CITY LIFE

ARCHITECTURAL CHARACTER



ACTIVITIES



CULTURE



1 City Life images rating - using the scale below (three stars being most favored), please provide your personal rating of the vibrancy and general livability you see in these images.

1 2 3

2 City Life - please reflect on the qualities of city life you see in the images below and relate them to how you would like to see Spokane transform.

CITY LIFE

ARCHITECTURAL CHARACTER



ACTIVITIES



CULTURE



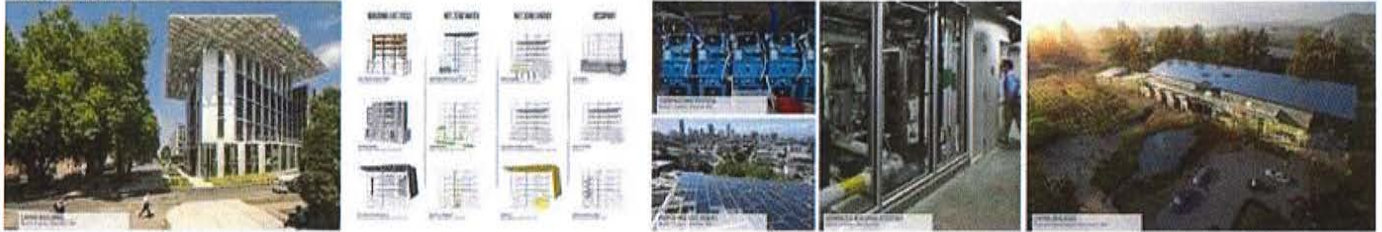
This next set of images provides examples of urban **Infrastructure**, such as park spaces, living buildings, eco-districts, etc. Click to the next screen to rate these examples.

INFRASTRUCTURE

INFRASTRUCTURE - PARK



LIVING BUILDINGS



ECO-DISTRICTS



3 Infrastructure images rating - please indicate your degree of interest in the infrastructure examples depicted.

1 2 3

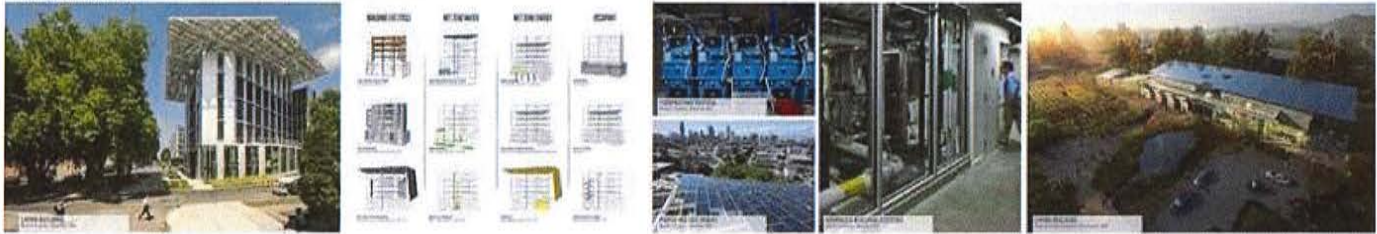
4 Infrastructure - please enter your comments below on desired infrastructure features.

INFRASTRUCTURE

INFRASTRUCTURE + PARK



LIVING BUILDINGS



ECO-DISTRICTS



Nature in the urban landscape is featured in these examples, incorporating spaces like blue-greenways, urban agriculture and parks. Are these options appealing to you?

NATURE

BLUE-GREEN WAYS



URBAN AGRICULTURE



PARKS



5 Nature images rating - please share the degree to which you think nature features are important in urban life.

1 2 3

6 Nature - please tell us more about your preferences for nature elements in the city.

NATURE

BLUE-GREEN WAYS



URBAN AGRICULTURE



PARKS



A large dashed rectangular box for writing.

Transportation is the focus of these pictures (arterial and transit, neighborhood, block). Do these images relate to what you would want in your mobile life?

TRANSPORTATION

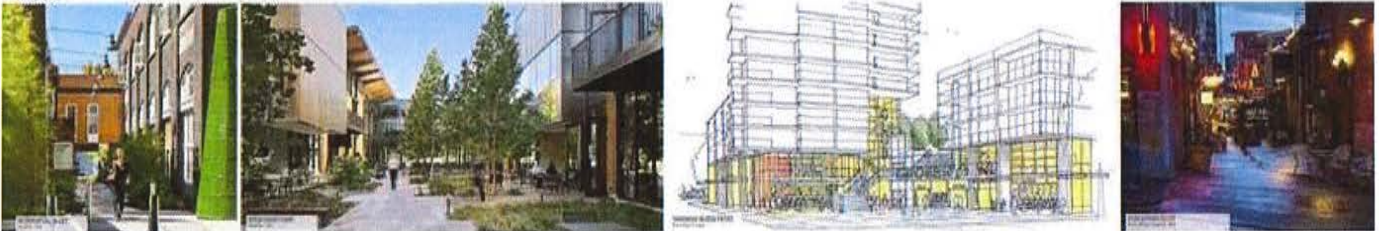
ARTERIAL + TRANSIT



NEIGHBORHOOD



BLOCK



7 Transportation features rating - please rate the transportation features presented.

1 2 3

8 Transportation - please tell us more about what you want mobility-wise in The University District.

TRANSPORTATION

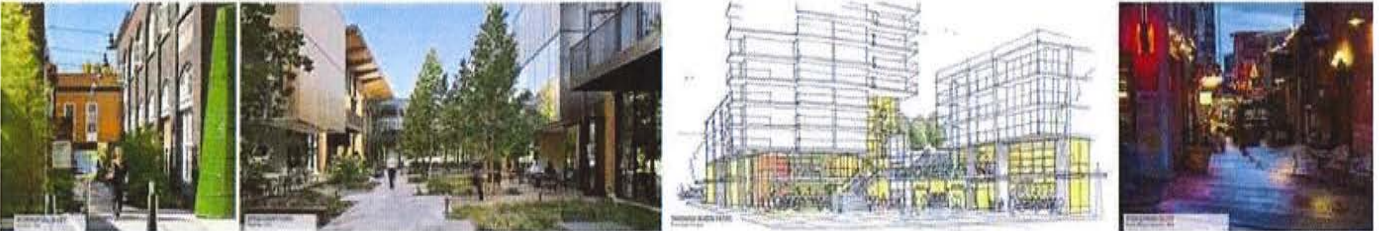
ARTERIAL + TRANSIT



NEIGHBORHOOD



BLOCK

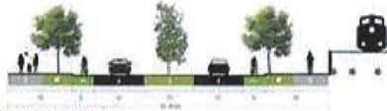


The next two boards show **Existing Right of Way** and **Inspirational Right of Way** options on University District streets. Below are existing conditions. Click to the next page to see Inspirational alternatives.

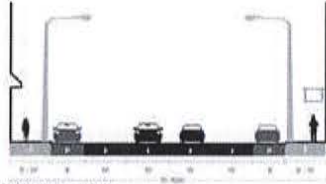
EXISTING CONDITIONS



MAIN AVENUE



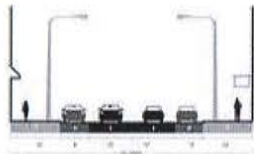
MLA JR BLVD / E SPOKANE BLVD



SHERMAN/SRAGUE STREET



INDYHO STREET



PACIFIC STREET



SHERMAN STREET



MLA BLVD



SHERMAN STREET



SRAGUE STREET



What do you think of these **Inspirational Right of Way** alternatives?

RIGHT OF WAY INSPIRATION



TRANSIT/MULTIMODAL ARTERIAL

- TRAVEL LANES NARROWED TO 19 FT FOR CYCLE TRACK
- INTERSECTIONS DESIGNED TO REGULATE LEFT TURNS
- SPEED LIMIT 35
- AVG DAILY TRAFFIC + 30% (DON'T CHANGE)
- RETAIL SALES INCREASED AFTER CYCLE TRACK
- CAR TRAVEL TIMES INCREASED, MAINTAINED SAME NUMBER OF THROUGH LANES, ADDED LEFT TURN LANES
- PEAK HOUR TRIPS SHORTENED 8 SECONDS



BOULEVARD/MAJOR ARTERIAL

- TWO LANES OF TRAFFIC REPLACED WITH PARALLEL PARKING/INTERSECTIONS DESIGNED TO REGULATE LEFT TURNS
- SPEED LIMIT 35
- AVG DAILY TRAFFIC + 30% (DON'T CHANGE)
- RETAIL SALES INCREASED AFTER CYCLE TRACK
- CAR TRAVEL TIMES INCREASED, MAINTAINED SAME NUMBER OF THROUGH LANES, ADDED LEFT TURN LANES
- PEAK HOUR TRIPS SHORTENED 8 SECONDS
- BIKES ARE GOOD FOR BUSINESS
- LATER STREETS FOR EVERYONE=CRASHES DECLINE



PLAZA/SCAPES BOULEVARD

- PLAZA AND HARDSCAPE REINFORCE ZONE FOR PEOPLE
- INTERIM PARKING FOR DRUG/ALCOHOL RETAIL STOPS
- INTERIM LOADING/LOAD ZONES FOR DELIVERY
- PARK LIKE SPACE WITH LANDSCAPING, HARDSCAPE AT HUMAN SCALE



CITY/NEIGHBORHOOD STREET

- ONE TRAVEL LANE CONVERTED TO BUFFERED BIKE LANE
- SPEED LIMIT 25, REDUCED TO 35
- AVG DAILY TRAFFIC + 60% (DON'T CHANGE)
- PROVIDES CYCLISTS WITH SAFE, CALM LINK TO RIVERS



GREEN CORRIDOR

- EXTENSION OF PARKS, GREEN CORRIDORS
- A NO-CAR ZONE, A PLACE FOR PEOPLE, WILDLIFE, NATURE
- PROVIDE HABITAT AND CONNECTION TO NATURE
- DAYLIGHT STORMWATER/STREAMS



9 Right of Way - please enter your comments below regarding the existing and/or inspirational right of way images.

10 Gateway Bridge Images (for those of you who attended the Open House and saw these boards) - Please share your thoughts on the Gateway Bridge images.

Thank you for your input on the following wrap up questions.

11 What is your greatest hope and your greatest concern as The University District develops?

12 What would you like Spokane to look like in 2035? In 2065?

13 What would you like to experience in a five minute walk through The University District whether there to live, learn, work or play?

14 Both nationally and globally, how can The University District develop to help make Spokane a highly unique and desirable urban community?

15 Any additional feedback on The University District Visioning Open House?

16 Tell us more about you

The information provided will be useful for us to follow and track feedback. However you are welcome contribute anonymously by leaving the fields blank.

17 Name

[Dashed text input box]

18 Organization

[Dashed text input box]

19 Job Title

[Dashed text input box]

20 Email

[Dashed text input box]

21 Work Phone Number

(XXX)-XXX-XXXX

[Dashed text input box]

22 Age Range

- 18 or younger
- 19 - 24
- 25 - 34
- 35 - 44
- 45 - 54
- 55 - 64

65 or older

Submit

Never submit passwords! - Report abuse