



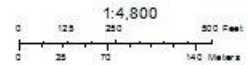
South Bridge Landing Vicinity

April 20, 2015

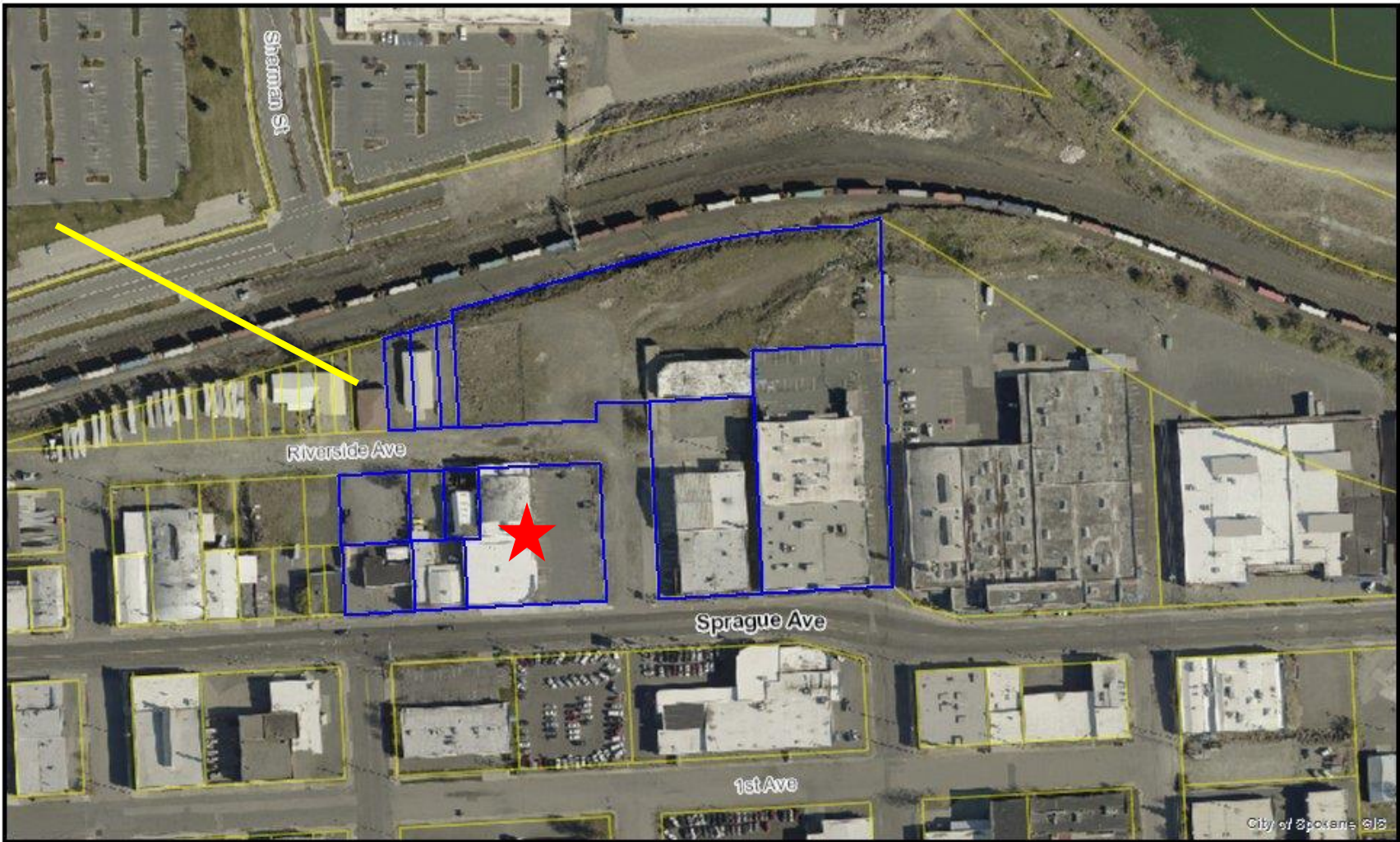
Legend

Parcel Number

Parcel



**THIS IS NOT A LEGAL DOCUMENT.**  
 The information shown on this map is compiled from various sources and is subject to constant revision. Information shown on this map should not be used to determine the location of facilities in relationship to property lines, section lines, blocks, etc.



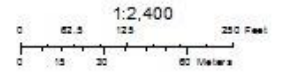
South Bridge Landing Area

April 20, 2015

Legend

Parcel Number

 Parcel



**THIS IS NOT A LEGAL DOCUMENT.**  
 The information shown on this map is compiled from various sources and is subject to constant revision. Information shown on this map should not be used to determine the location of facilities in relationship to property lines, section lines, streets, etc.

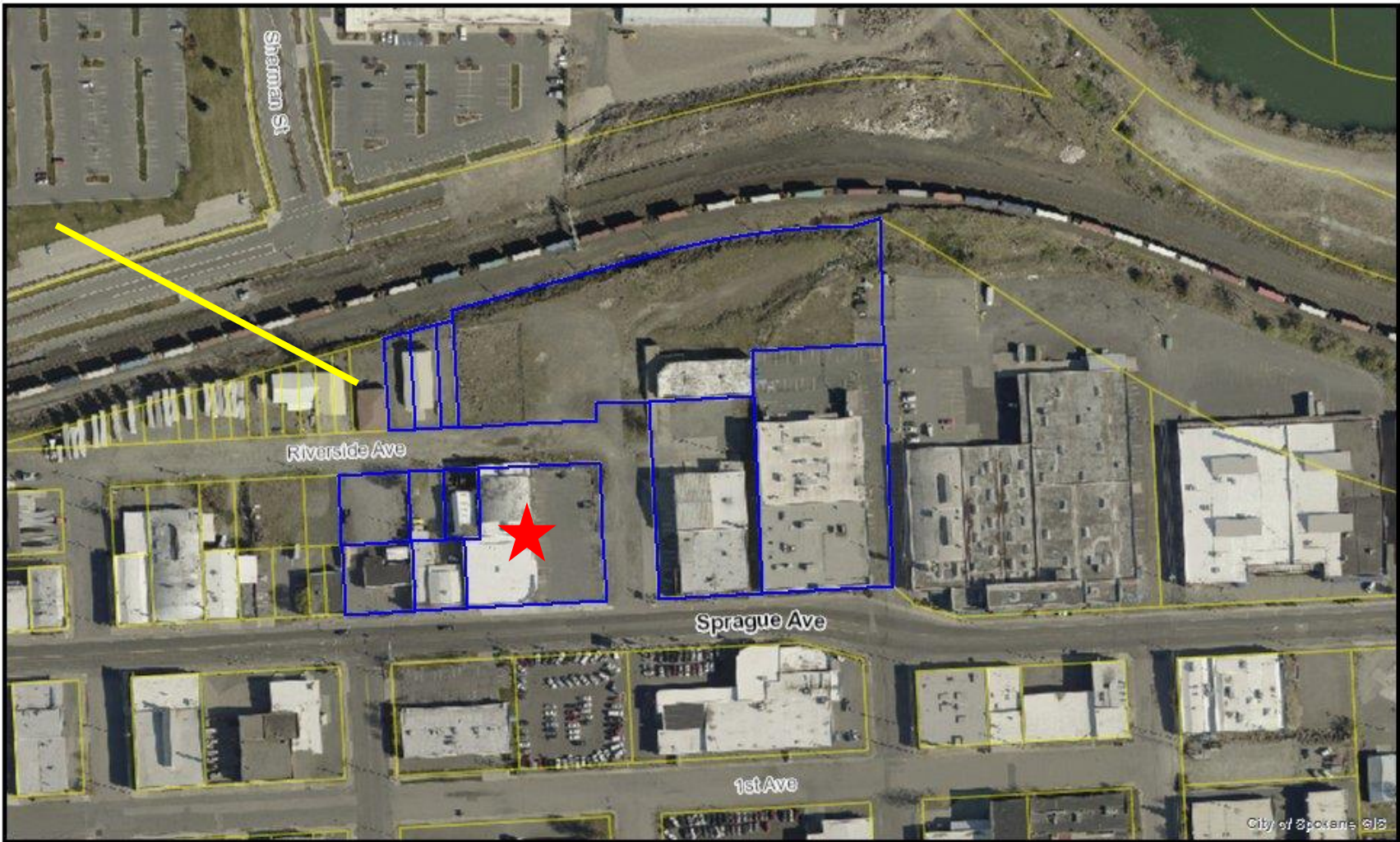
## South Bridge Landing Graphic Illustration



## Statement of Commitments to South Bridge Landing:

### 2. *The City intends to undertake its best efforts to:*

- a. ***Design and build the public infrastructure*** (streets, pedestrian corridors, streetscape and urban landscape, sanitary and storm sewers, and potable water). All utilities will be stubbed to the property line of development parcels.
- b. ***Evaluate the vacation of some Riverside Avenue*** right of way and portions of Sheridan Street right of way to adjoining properties, pursuant to Chapter 35.79 RCW.
- c. ***Provide prompt permit review for development proposals***, including a 20 working day plan review turn-around time.
- d. ***Waive general facility charges.***
- e. ***Create a gateway entrance at Sprague and Division*** for east bound traffic.
- f. ***Design and install a “way finding” signage approach*** from I-90 and downtown to the Landing.



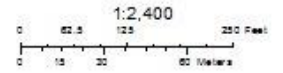
South Bridge Landing Area

April 20, 2015

Legend

Parcel Number

 Parcel



**THIS IS NOT A LEGAL DOCUMENT.**  
 The information shown on this map is compiled from various sources and is subject to constant revision. Information shown on this map should not be used to determine the location of facilities in relationship to property lines, section lines, streets, etc.